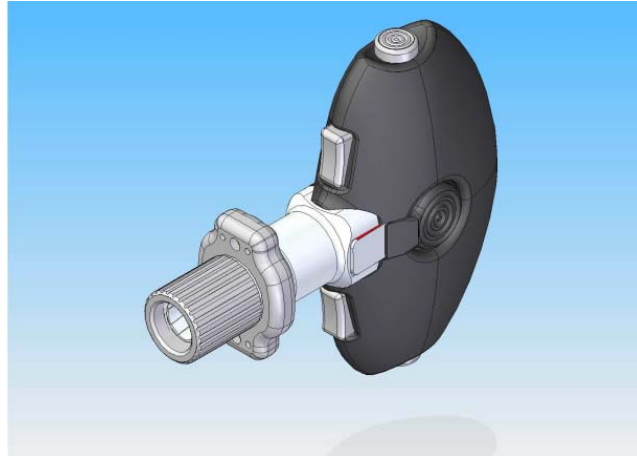




CONSTITUTION ARMS
12 Hoffman Street • Maplewood, NJ 07040-1114
(973) 378-8011 • www.constitutionarms.com

Palm Pistol™



An ergonomically novel self-defense firearm chambered in 9 mm. Slim profile. Suitable for home use, concealed carry enthusiasts, collectors or backup gun. Ideal for disabled, seniors and others with manual dexterity limitations. Optional Picatinny rail. ATF approved as a standard pistol.



Palm Pistol™
Patent Pending

The Palm Pistol is an ergonomically novel double action only defensive firearm chambered in 9 mm that uses the thumb for firing pin release instead of the index finger. It is both ambidextrous and bilaterally symmetrical about its longitudinal axis rendering it functionally independent of the users hand dominance or bilateral orientation. It has no iron sights thus rendering eye dominance and sight alignment immaterial.

One of the principle factors of inaccurate fire is lateral muzzle drift induced during trigger squeeze. Use of the thumb for releasing the firing pin mitigates this problem. Also, the slim profile presents the ability to readily conceal the firearm without imprinting. There are no external moving parts which permit it to be fired from within a pocket or other clothing without the possibility of jamming on fabric. Furthermore, use of the thumb may reduce the likelihood of an accidental discharge due to startling and body alarm reaction (BAR) induced during a high stress encounter with an armed opponent.

The design incorporates a loaded chamber indicator and 3-digit combination disc cylinder lock which secures release of the triggers and positively locks the breech during firing. A Picatinny rail for attaching accessories such as a strike bezel, light or the LaserLyte Subcompact V2 laser sight may also be incorporated as optional features.

The design is suited for home use, concealed carry enthusiasts, collectors and as a backup gun. It is ideal for seniors, disabled or others who may have dexterity limitations or difficulty sighting and controlling a traditional revolver or semi-automatic pistol. For example, it may serve as an adaptive defensive firearm for people with phalangeal amputations or fusions. Approximately 30,000 non-work related amputations involving one or more fingers occur annually within the United States.¹

It may also have government application for employees who require personal protection yet do not traditionally train with or carry firearms. This might include civilian administrative staff working on government installations in high risk domestic or foreign locations (embassy personnel who are at risk of kidnapping), employees who might be intimidated by revolvers or semi-automatic pistols, or clandestine personnel. It may also serve as a backup gun for military police, commanders located in the confined quarters of a tank, airline pilots or stewards or security guards.

An effort is underway to obtain Center for Medicare and Medicaid Services (CMS) Durable Medical Equipment (DME) coding for the Palm Pistol. DME is defined under federal law² as equipment that is capable of withstanding repeated use, is primarily used to serve a medical purpose, generally is not useful to an individual in the absence of an illness or injury, and is appropriate for use in the home. We argue the pistol meets this definition in that it can withstand repeated use, the medical purpose served is extension of life expectancy, all living individuals are subject to the "injury" of shortened life expectancy due to loss of life from criminal assault and it most assuredly is appropriate for use in the home. If we are successful in obtaining DME status, it is possible the medically prescribed purchase of the Palm Pistol will be reimbursable by health insurance companies for qualified insured's. The Food and Drug Administration (FDA) is currently conducting a "Device/Not a Device" determination to decide whether the device will be regulated and if so, whether it will be considered a Class I, II or III medical device.

The majority of states now permit concealed carry of firearms for personal defense and this will present a steady civilian market for this type of highly concealable gun. The integral cylinder combo lock eliminates the need for a separate trigger locking device. The recent DC v Heller decision may produce an increased demand for concealed carry firearms. The success of the Taser C2 and increased manufacturers marketing campaigns in mainstream publications such as PC Magazine further suggests widespread

¹ *Annals of Emergency Medicine*, Volume 45, Issue 6, June 2005, pages 630-635.

² Title 42 CFR 414.202

potential interest in this product type. Also, the increasing interest in cane fighting by senior citizens for both exercise and self-defense, suggests a large potential market.

Sales will be direct to consumers by Constitution Arms, a licensed FFL and NJ Retail Firearms Dealer, through the company's own website at www.palmpistol.com, various online auction websites and other avenues. Elimination of the dealer and wholesale network will retain profits in the company and permit price competitiveness. An attempt will be made to produce the product entirely with US made components. The ATF has classified the design as a standard "pistol" and is thus not subject to NFA regulations. This will permit the gun to be sold like any other traditional handgun without the additional tax and registration requirements of designs that otherwise would have been classified as "AOW" (Any Other Weapon).

For further Information, contact Matthew Carmel, President, Constitution Arms, (973) 378-8011 mcarmel@constitutionarms.com.

Parameter	Advantage	Disadvantage
Single shot	Attacker unable to use against victim after first shot.	Victim only has one opportunity to stop attacker before reloading.
Use of thumb to fire	Reduces muzzle drift. Less likelihood of accidental discharge from body alarm reaction. Thumb is stronger than index finger. Adaptive for users with phalangeal amputations or fusions.	Unconventional mode of operation requires familiarization.
Laser sight	Eliminates need for sight alignment. Attacker may cease pressing his assault when observing his body targeted by laser.	Not visible in bright daylight. Requires battery maintenance. Increases weight of firearm and makes it less concealable.
Chambering	9 mm has reasonable stopping power if using a hollow point or EFMJ round. Lower recoil and cost of ammo. Ammo lighter and less expensive than larger calibers.	Less stopping power than larger caliber conventional rounds.
Adjustable trigger pull	Trigger pull can be customized according to personal preference.	Lighter trigger pull can increase potential for an accidental discharge.
Ambidexterity and bilateral symmetry	May be fired effectively without regard to hand or eye dominance.	None.
Combination lock	Eliminates need for key or separate gun lock. Can be set with personal code.	When locked, firearm is temporarily non-functional. Code may be forgotten.
No external moving parts	Can be fired from concealment without hanging up on clothing.	No visual clue that firearm is operable.
Chamber access latch	Easy access to chamber. Also serves dual function of loaded chamber indicator and extractor.	None.
Safeties	Prevents unintentional discharges. Also provides positive locking of breech by disabling chamber access latch.	Any mechanical safety may be subject to physical failure.